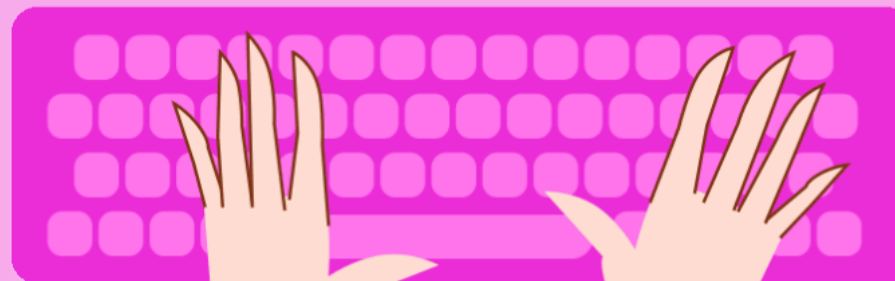


BRES technology

How do I get to Clever at home?





What is Clever?

Clever is an easy way for your child to log in and learn with all of the online programs they use at school. With their own personal portals, students can learn with resources selected by their teacher and district.

Schools use Clever so students can have all of their digital resources in one place. Clever also eliminates the need to remember multiple usernames and passwords.

How to find Clever at home Using a personal device.

1 Open Edge
(Or your browser of choice)



bristowrunes.pwcs.edu

2 Go to the BRES
Website



BRISTOW RUN ELEMENTARY
SCHOOL

Our Panther Pride is Hard to Hide

3 Find the Clever
Quick Link

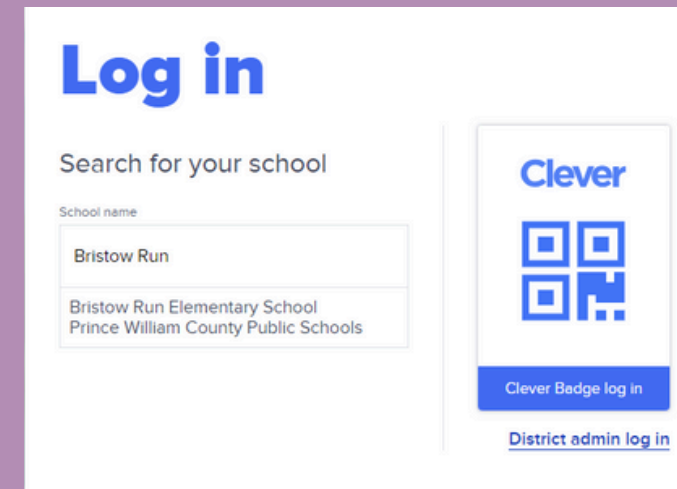


Clever Login

You can also go directly to clever.com/login

Log In to Clever

1 Find BRES



Log in

Search for your school

School name

Bristow Run

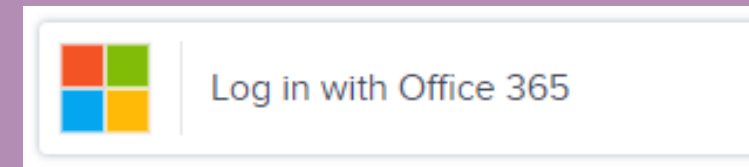
Bristow Run Elementary School
Prince William County Public Schools

Clever

Clever Badge log in

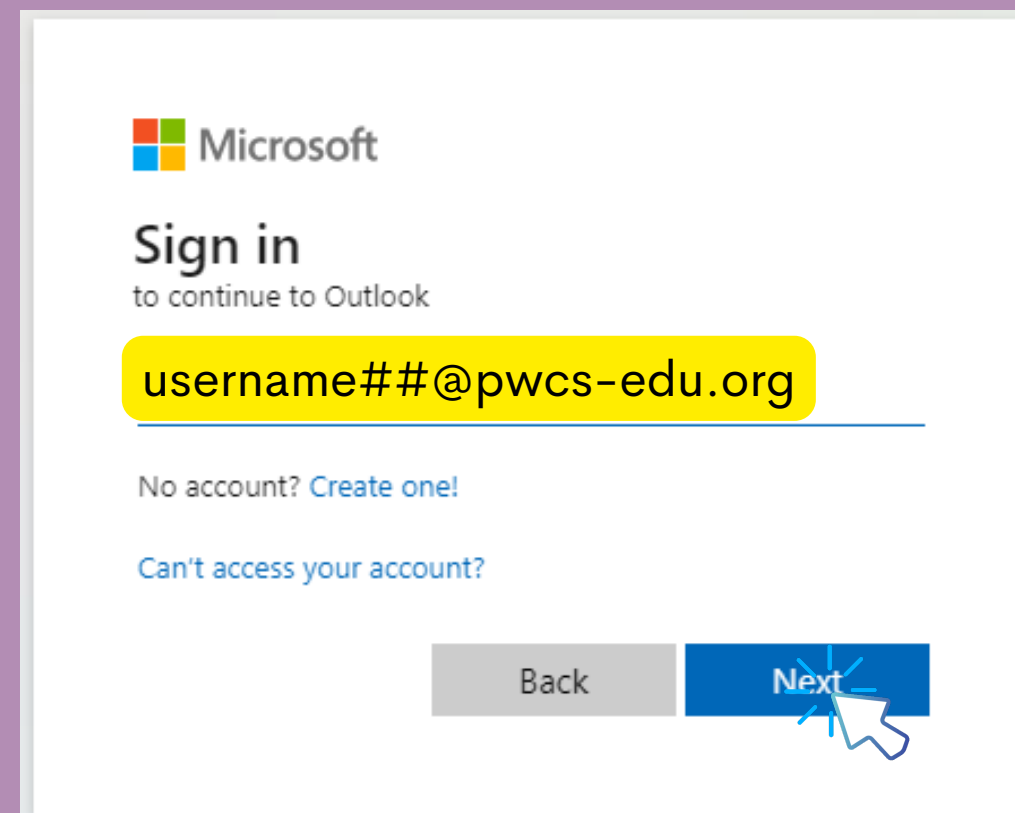
District admin log in

2 Choose Log in with Office 365



Log in with Office 365

3 Use PWCS username and password to log in



Microsoft

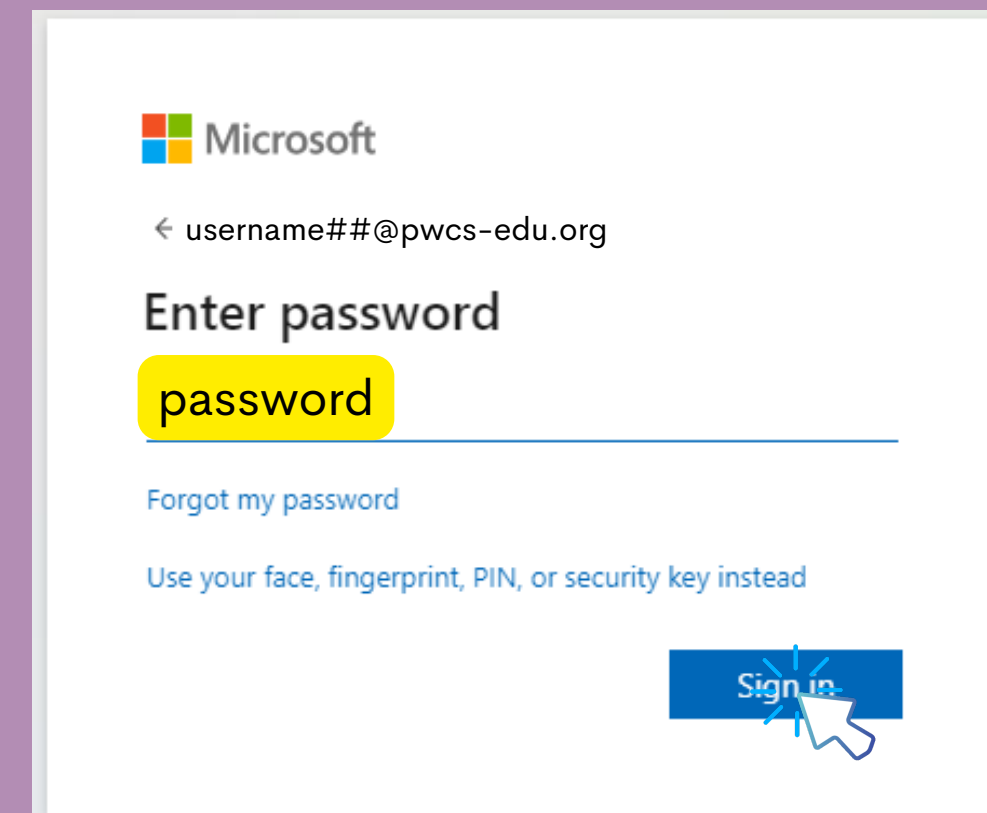
Sign in
to continue to Outlook

username##@pwcs-edu.org

No account? [Create one!](#)

[Can't access your account?](#)

Back Next



Microsoft

← username##@pwcs-edu.org

Enter password

password

[Forgot my password](#)

[Use your face, fingerprint, PIN, or security key instead](#)

Sign in



Typing.com

What can my student do in Clever?



**Zearn
Math 1-5**



Book Creator



**IXL
Math 3-5**



Wixie



**Lexia Core 5
Reading K-5**